



September 26, 2022

Re: Evacuation Zones 2022

Dear Residents,

As we gain additional information regarding Hurricane Ian, it appears this storm may be headed our way, as a Category 3 or 4 hurricane, both slow moving and large in scope, as it arrives.

Storm surges are a concern in our community. I pulled up the map from the Manatee County website and was able to enlarge the detail of the Evacuation Zones in River Wilderness. I have enclosed a copy of this detail for your review. I have also enclosed the grid detailing what the colors on this map mean. You may be surprised where your home lies, so I invite you to take a look at the map, and also for full detail on the Manatee County Evacuation Map:

<https://manateegis.maps.arcgis.com/apps/webappviewer/index.html?id=e4602daf0e2a49b39927cb729a821466>

An additional thought is "KNOW YOUR HOME". What is the age of your home?

- Built
on
or
after
March
2012
=

- 150
mph
winds
- Built
March
2002
–
March
2012
=
130
mph
- Built
before
March
2002
=
110
mph
on
the
coast,
as
low
as
90
mph
in
places
like
Duette

Also consider if you require electricity for your medical needs?

We cannot tell you what to do, however, if you are in Zone A and the county calls for mandatory evacuation, you will be requested to evacuate by the county.

Levels are classified using letters A through E. Areas not within a hurricane evacuation level declared "outside of the evacuation area" or N/A. Evacuation levels are not the same as flood zones and do not correlate to the category of a hurricane.

Evacuation Level A is considered to be "lower" than Evacuation Level

E. Level A residents will be evacuated first. If your property lies within two different levels, you should evacuate with the lowest level. We have homes in Evacuation Level A through E.

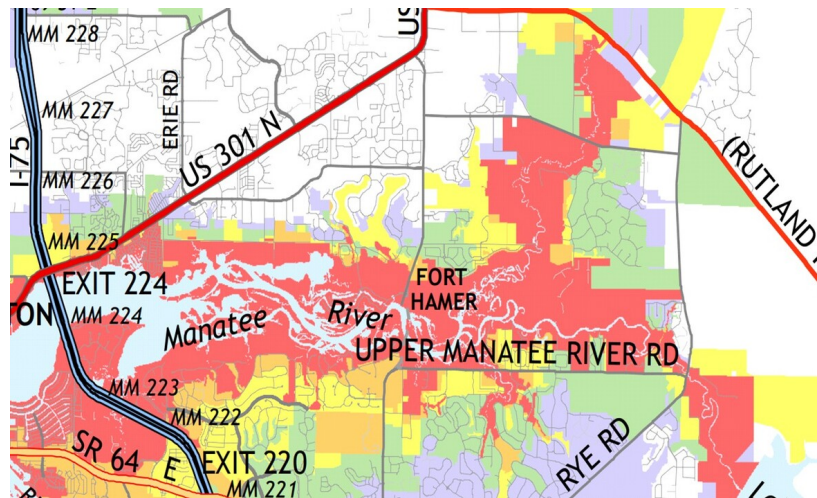
Do not rely on these emails for your information or to make decisions regarding whether you evacuate or ride the storm out. Our goal is to simply make you aware of the resources you can utilize to make the decisions for you and yours. Please check on your neighbors to see if they need assistance and have a goal to finish your personal preparations today.

Yours truly,

Linda Van Dillen
RWHOA President, 2022

Att: [Evacuation Zones PDF](#)

HOA Website: www.rwhoa.org



Evacuation Level	Potential Surge Inundation
A (red)	11 feet
B (orange)	14 feet
C (yellow)	18 feet
D (green)	27 feet
E (purple)	33 feet

Hurricane evacuation levels are based on hypothetical storm scenarios, factoring in atmospheric pressure, size, speed, and track to determine the potential storm surge for the location. Hurricane levels represent the potential height of salt water inundation from storm surge (not freshwater or rainfall flooding).

Evacuation levels change as new data becomes available and as the coastline changes, so you should check your level ever year.

©2022 River Wilderness of Bradenton Foundation | C/O Argus Property Management
2477_Stickney Point Road Suite 118A Sarasota FL 34231

[Web Version](#)

[Preferences](#)

[Forward](#)

[Unsubscribe](#)

Powered by
GoDaddy Email Marketing®